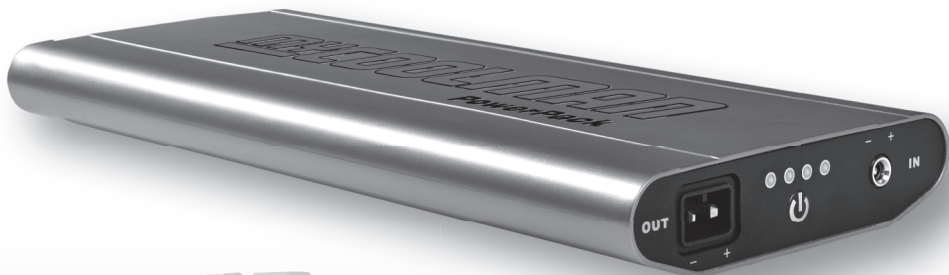


MYCOOLMAN

PORTABLE POWER PACK

Operation Manual *for Portable Fridge Power Pack*

Model CPP 15



www.mycoolman.com.au

 LEISURE-TEC Australia Pty Ltd

MYCOOLMAN PORTABLE POWER PACK

Content

Thank you for purchasing the myCOOLMAN Power Pack. For safety, please read this operation manual and store the Power Pack safely when not in use. If the Power Pack is a gift for someone else, please make sure to include this manual as well.

Contents	page 2
Important Safety Warnings	page 3
LED Battery Capacity Indicator	page 4
Operation Instructions & Further Information	page 4-5
Cleaning & Maintenance	page 6
Troubleshooting	page 6
Notes	page 7
Product Specifications	page 8
Warranty Terms & Conditions	page 8

Package Content



Attention:

Please fully charge your Power Pack before use.

Failure to read the Operation Manual in its entirety may result in a fire hazard or electric shock - due to incorrect usage.

Package Content

- 1 Power Pack (Battery)
- 2 DC Power Cord
- 3 Power Pack Charger
- 4 AC Power Cord
- 5 Operation Manual



myCOOLMAN *PORTABLE POWER PACK*

Important Safety Warnings

The myCOOLMAN Power Pack is designed for use with the myCOOLMAN portable fridges. No responsibility is taken for poor performance or damage to the Power Pack or 3rd party product connected to the Power Pack.

- The Power Pack contains a Lithium Ion battery.
- Misuse, dropping or excessive force may cause product damage.
- DO NOT store the Power Pack with a drained or discharged battery.
- DO NOT USE if the Power Pack body is cracked or broken, please decommission immediately.
- DO NOT USE if the Power Packs flexible cables are damaged in any way. Replace immediately.
- DO NOT wash.
- DO NOT store the Power Pack in a hot or humid environment.
- DO NOT get wet, spray or submerge the Power Pack in liquid.
- If the Power Pack becomes wet, dry immediately.
- Maximum output of the Power Pack is 100 W.
- DO NOT dispose of Power Pack in heat or fire.
- DO NOT charge the Power Pack with aftermarket multi voltage adapter. Damage will occur.
- DO NOT plug power pack into DC vehicle socket.
- DO NOT charge in ambient temperatures over 43 °C.
- ONLY charge the Power Pack with the genuine myCOOLMAN charger.
- Batteries should NOT be stored, used or charged near flammable liquids or vapors.
- DO NOT reverse the polarity.
- DO NOT cut, join or extend flexible cables.
- DO NOT use the Power Pack to power products other than the myCOOLMAN portable fridges.
- DO NOT store, charge or use in an explosive atmosphere.
- DO NOT carry the Power Pack by the cord.
- When charging: Turn off the power at the wall switch before disconnecting the Power Pack.
- The charger supplied is safe for use with the Power Pack, the charging of other batteries with the supplied myCOOLMAN charger may cause damage or personal injury.
- DO NOT short out the terminals on the Power Pack.
- DO NOT store the Power Pack with metal objects such as nails or coins.
- When not in use please turn the Power Pack off.
- Store the Power Pack in a cool dry place.
- DO NOT destroy or disassemble.

NOTE:

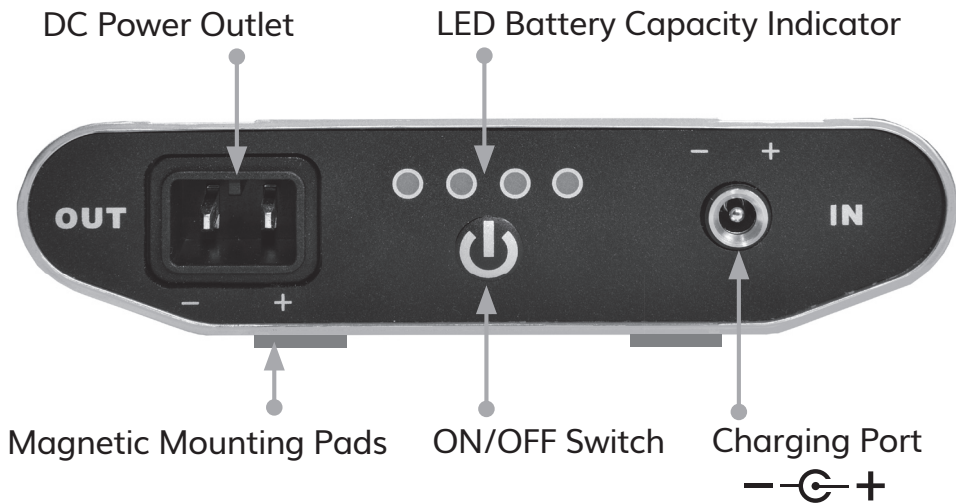
- *Restrictions apply to taking batteries on airplanes, always check with airline first.*

MYCOOLMAN *PORTABLE POWER PACK*

Operation Instructions & Further Information

Product Features:

- Magnetic Mounting Pads
- DC Power Outlet
- Charging Port
- ON/OFF Switch
- LED Battery Capacity Indicator
- Rated to IP66



LED Battery Capacity Indicator

LED Indicator	Remaining Battery Capacity
1 LED	10-25 %
2 LED's	25-50 %
3 LED's	50-75 %
4 LED's	75-100 %

myCOOLMAN *PORTABLE POWER PACK*

Operation Instructions & Further Information

To turn the Power Pack on/off:

Press and hold the ON/OFF switch for 2 seconds.

Charging the Power Pack:

During the Power Pack charging process the LED's will flash indicating the level of battery charge, when all four LED's turn on steady, that indicates the Power Pack is now fully charged. The Power Pack output will be disabled during charging process.

Low Battery Automatic Shutdown:

The Power Pack will automatically turn off when the battery output is lower than 12.6v. All 4 LED's on the control panel will flash simultaneously. When this occurs please charge the Power Pack to use again.

System Protection:

If the Power Pack detects system irregularities or issues, the built-in protection will kick-in and all 4 LED's on the control panel will flash simultaneously.

Disconnect the Power Pack from the refrigerator, rectify cause and restart the Battery Pack by pressing and holding the ON/OFF switch for 2 seconds to turn the unit off, then press and hold the ON/OFF switch again for an additional 2 seconds to switch back on.

The following may cause the System Protection to activate:

- Short Circuiting Protection
- Over Current Protection
- Over Charging Protection
- Completely Discharged Battery
- Excessive Ambient Heat

NOTE:

When using the Power Pack with your myCOOLMAN portable fridge/freezer, it is suggested to set the fridges battery protect level to LOW.

NOTE:

We recommend charging the Power Pack fully at least once every 3 months, even if the Power Pack has not been used. This will maximize battery performance.

We also recommend when possible to recharge the battery before it is completely discharged.

MYCOOLMAN *PORTABLE POWER PACK*

Cleaning & Maintenance

- You can clean the Power Pack by wiping down the outside with a clean damp cloth, dry carefully.
- DO NOT wash.
- DO NOT submerge the Power Pack in liquid, get wet or spray it with water.

Troubleshooting

The Battery Pack is not turning on:

- Ensure that the battery is charged
- Ensure that the unit is powered on
- Battery will shut down if exposed to excessive heat – Allow to cool and re-start

The Battery Pack is not charging:

- Ensure that plug is fully pushed in
- Check that the power point is working
- Charging must be conducted under 43 °C

Battery Disposal



Batteries should be recycled in an environmentally sustainable manner, for more information see your local regulatory body or visit: <https://batteryrecycling.org.au>

MYCOOLMAN *PORTABLE POWER PACK*

Notes:

myCOOLMAN PORTABLE POWER PACK

Product Specifications

Charging Time from 0-100%	
Charging Power 50W	5 - 6 Hours
Product	
Battery Type	Lithium Ion Battery
Capacity	15 Ah
Safety Guard	- Short Circuiting Protection - Over Current Protection - Over Charging Protection - Over Discharge Protection - Over Heat Protection
Input	16.8v/ 3 A
Battery Output Voltage	14.8v
Battery Output Current	8 A
Weight	1.65 kg
Physical Dimension	330 x 140 x 36.5 mm
Operation Temperature Recommended	+16 °C to +43 °C *

*Operation above 43 °C is possible, however higher temperatures may increase current draw (Ah) and reduce refrigerator performance.

Warranty Terms & Conditions

To warranty register your unit please head to: <https://mycoolman.com.au/pages/warranty-registration> and upload a copy of your proof of purchase as well as completing the online form.

When you buy a myCOOLMAN Power Pack you have peace of mind knowing that it is backed by a 1 year warranty against defects in materials and workmanship. The myCOOLMAN warranty is provided in addition to any rights provided under Australian Consumer Law. All claims under this warranty should be made by returning the product to the place of purchase at your expense, with the detail of the fault, proof of purchase and fitment details. If we determine that a myCOOLMAN product is defective in materials or workmanship during the warranty period, we will either repair or replace the unit.

This warranty does not apply to failure or damage to a myCOOLMAN product caused by incorrect or faulty fitment, accidental or intentional damage, failure of other products, incorrect application, incorrect voltage, environmental damage, operation of the product outside of its environmental and technical specifications, or repair or modification carried out by anyone other than an authorised repairer.

Designed in Germany, made in China for

LEISURE-TEC Australia Pty Ltd
50 Metrolink Circuit
Campbellfield, VIC 3061 Australia
1300 07 2018



www.mycoolman.com.au